



# SUSTAINABILITY

## REPORT 2023





## Table of contents

Introduction	2
Sustainability vision	3
Strategy	3
Environmental aspects	3
Raw material consumption and CO2 emissions	4
Energy consumption	8
Waste management	12
Water consumption	14
Sustainable purchasing	16
Social responsibility and working conditions	18
SDG goals	20
Certifications	22
Conclusion and acknowledgments	23

# Introduction

*Lijnco aims to be Europe's number one in sustainable and effective communication. We want to be at the forefront of environmentally friendly production and prove that quality and sustainability can go hand in hand. With this report, we hope to provide insight into our progress in this area and to underline our responsibility for the future.*

As director of Lijnco, I proudly present our sustainability report. Sustainability and environmental awareness are in the DNA of our company. At Lijnco, we are actively committed to minimizing our environmental impact while continuing to meet the highest quality standards. The fact that we are serious is evident from the many initiatives reflected in leading certifications that allow us to be seen as a leader in the graphics industry in terms of sustainability.

We are ISO 14001 certified, meet the strict requirements of FSC and PEFC for sustainable forest management, were the first graphics company to achieve the highest level on the CO2 Performance Ladder and are full version ClimateCalc certified: systems that give us detailed insight into the environmental footprint of raw materials, transport movements and production methods. We advise our customers with our expertise about CO2 reduction options linked to, for example, raw material and production choices and, if desired, provide a certified CO2 footprint of a produced order.

At Lijnco, we go further than just meeting standards; we are taking serious measures to reduce our CO2 emissions, by using our own solar- and wind generated energy. In addition, recycling and a circular economy play an important role in our strategy, which translates into 100% separate collection of residual flows and, where possible, the reuse of materials. Cooperation in the chain with suppliers is an important part of this.

Our commitment to sustainability is in line with the Sustainable Development Goals (SDGs) of the United Nations. With Lijnco's sustainable production processes, CO2 reduction and commitment to a circular economy, we support these global goals and take our responsibility towards a better future.

Lijnco strives to be Europe's number one in sustainable and effective communication. We want to be at the forefront of environmentally friendly production and prove that quality and sustainability can go hand in hand.

With this report, we hope to provide insight into our progress in this area and to underline our responsibility towards the future.

Jan de Klein CEO





### Vision on Sustainability

Lijnco is a leader in sustainable production within our industry. Thanks to our years of experience and insights, we have the knowledge and resources to improve the impact in the value chain and to advise our clients on reducing the product footprint.

Through targeted selection of raw material suppliers, based on sustainability criteria, we have achieved a CO<sub>2</sub> reduction of 35% in recent projects. This proves that Lijnco is serious and measurable about converting its lead and knowledge into results.

Collaboration with suppliers, production management and the RHLS innovation team is essential to continue innovating and to prove that high quality and sustainability go hand in hand. This approach combines efficiency, innovation and responsibility for the environment and society.

### Strategy

Lijnco BV strives for a healthy future in which high-quality graphic production goes hand in hand with a minimal ecological footprint through CO<sub>2</sub> reduction, use of circular and sustainable raw materials in all our processes.

We take effective steps to reduce our impact through innovative techniques, continuous improvement and collaboration.

### Environmental aspects

After a thorough materiality analysis, we have identified the most relevant environmental aspects for our business operations. The focus here is on five core areas: raw material consumption, energy consumption, waste management, CO<sub>2</sub> emissions and water use. We have looked at the environmental impact of our production process, but certainly also at the expectations of our stakeholders. With our strong advisory function and know-how in the field of sustainable production, Lijnco is a committed partner for the production of sustainable printing. We explain how we manage, monitor and continuously improve these environmental aspects.



## Raw material consumption & CO2 emissions

Producing printed matter requires a considerable amount of raw materials, of which paper is the most important. Inks, chemicals, and packaging materials also play an important role in the production process. The consumption of these raw materials has a direct influence on the environmental impact of our business operations.

### Paper

We only use paper that is certified according to the sustainability standards FSC (Forest Stewardship Council) and PEFC (Programme for the Endorsement of Forest Certification). These certifications guarantee that the paper comes from responsibly managed forests, in which attention is paid to the conservation of biodiversity, forest management and the rights of local communities. Lijnco has carried out due diligence on its paper suppliers in order to comply with the EUDR (the deforestation regulation concerns the origin of certain raw materials, including wood and thus paper pulp. The raw materials in question have not caused deforestation or forest damage during their production when sold on the EU market.) The conditions of the EUDR are included in the purchasing policy.

A lot of energy is needed for the production of paper; in order to keep the environmental impact of paper use as low as possible, it is important to gain insight. Lijnco has requested paper profiles from the relevant suppliers for all substrate types that it processes and if these are not available, Lijnco has had the footprint of the substrate determined by a recognized knowledge center. The footprint information is collected in ClimateCalc, with this system we can calculate a certified CO2 footprint on product level. The information from ClimateCalc and the collected paper profiles enables Lijnco to give substantiated advice for producing with a low environmental impact.

### Waste reduction

By using efficient production management and advanced printing techniques, we strive for the lowest possible waste percentage in our paper consumption. We optimize our production processes to minimize waste of raw materials, for example through careful planning and the reuse of residual materials where possible.

Use of recycled material: In addition to sustainably purchased paper, we focus on the use of recycled paper for our packaging

in order to reduce the demand for new raw materials and thus reduce the ecological footprint of our production.

### Inks and varnishes

We choose UV curable inks, thus avoiding the use of solvents. This contributes to a cleaner production process without employees being exposed to inhalation of harmful substances and a lower impact on the environment.

The careful handling of raw materials is an important part of our sustainability strategy. By continuously innovating and improving in the field of material use, we contribute to the protection of natural resources and reduce our ecological footprint.

Based upon the substrate certification assessment, the Foundation Certification Creative Industries hereby declares that

**LIJNCO B.V.  
GRONINGEN**

complies with the requirements according to the LCA-approach of the Greenhouse Gas Protocol, and ISO 14064-1:2019, in the field of Substrate Profiling (scope 3), based on the authorized carbon footprint calculation method: CO<sub>2</sub> & Energy Risk Analysis Program Creative Industries. This certificate - in relation to the company name - only applies to:

**Substrate Profile:**  
**150CBS1WMUVO1SP2-330 - 150**  
**GR. BEVEILIGD PAPIER IBG MW**

Specification of reference data in relation to the designated company			
LCA quality indicator	Cal. Analysis level research	Manufacturer / Official product name	School Paper - 150CBS1WMUVO1SP2-330 - 150gr. Beveiligd Papiert 150gsm
Plant location	Nederland	Intermediate supplier (if applicable)	N.v.t.
CO <sub>2</sub> (kg/m <sup>2</sup> )	475 kg CO <sub>2</sub> eq / ton	Elec. consumption	535 kWh / ton
Total transport distance	155 km	Substrate Key Performance indicator	0.14 ton CO <sub>2</sub> eq / ton

Date of issue: 31-07-2024      Certification expiry date: 30-07-2025

On behalf of the Foundation Certification Creative Industries:

Lead auditor LCA: P.J. Huisman MSc      Director: drs. J.H. Koekenbergh

**SCCi**  
Stichting Certificatie Creatieve Industries

SCCi/Certificatenummer: SP 1135-2426-001

Substrate profile Lijnco BV



## Objectives

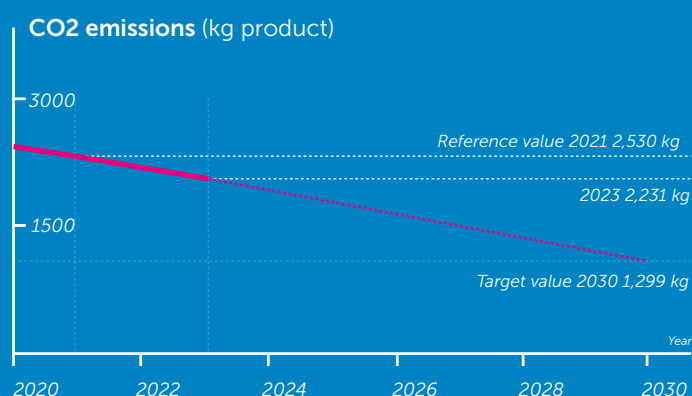
### Climate change

We aim to reduce CO<sub>2</sub> emissions per kilogram of product produced by 45% by the end of 2030 compared to the reference year 2021, by reducing emissions from 2530 gr CO<sub>2</sub>/kg product to 1299 gr CO<sub>2</sub>/kg product.

Progress will be reported annually in ClimateCalc.

2030 reduction Kg CO<sub>2</sub> eq / Kg product of 45%

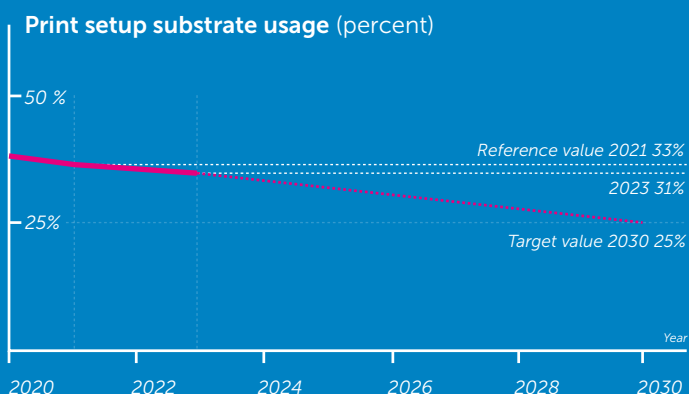
Reference value 2021	2,530 kg CO <sub>2</sub> /kg product
KPI 2023	2,231 kg CO <sub>2</sub> /kg product
Target Value	1,299 kg CO <sub>2</sub> /kg product



### Grondstof gebruik

Reducing the waste percentage (the difference between gross and net raw material requirements per kg of product produced) from 31% to 25% in 2030

Reference value 2021	33%
KPI 2023	31%
Target value	25%



### Scope 3 reduction

Lijnco reduces the use of raw materials and uses only raw materials with the lowest possible footprint.

By 2030, the CO<sub>2</sub> footprint within scope 3 will be at least 45% lower than in the reference year 2021, through more efficient use of raw materials and more sustainable material choices.

**Target Value:** Minimum 45% reduction in 2030

- *Measurement frequency: Annual measurement and reporting in CO<sub>2</sub> performance ladder*
- *Data sources: Raw material profiles (LCA), supplier data, sustainability reports*

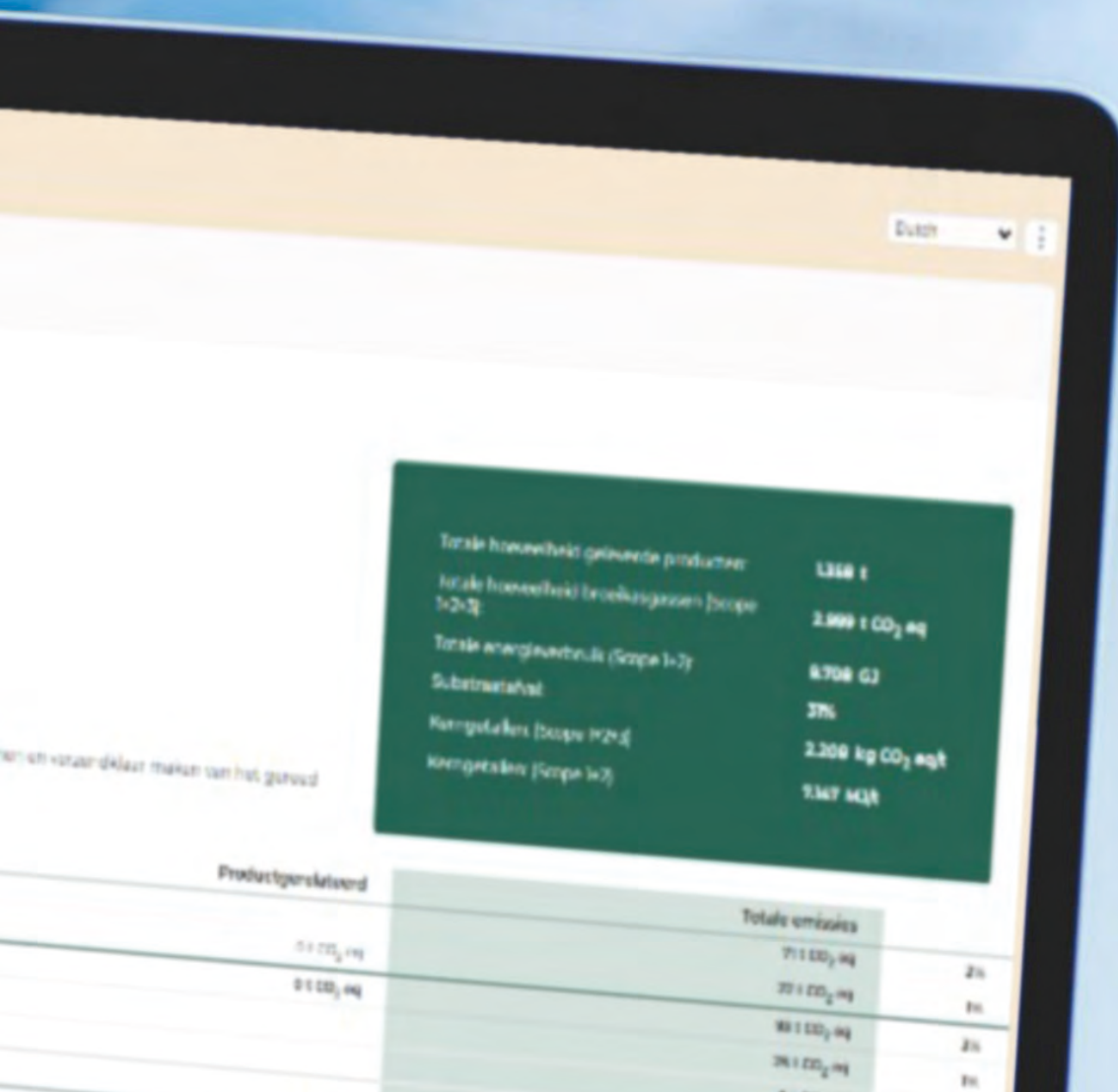
Paper warehouse at Lijnco





[illegible]





## What is Climate Calc

ClimateCalc is an advanced calculation tool that provides customers and manufacturers with accurate information on the total carbon footprint of print and packaging products. This tool takes into account emissions in Scope 1, 2 and 3, as recommended by the Greenhouse Gas Protocol and various international industry and ISO standards.

### What does ClimateCalc measure?

The calculations include:

- **Scope 1-emissions:** Direct emissions from own sources, such as company vehicles and heating.
- **Scope 2-emissions:** Indirect emissions from the consumption of purchased energy, such as electricity.
- **Scope 3-emissions:** Other indirect emissions, such as those from purchased materials, transport and waste processing.

### Why is ClimateCalc valuable?

A calculation with ClimateCalc provides insight into the specific factors within the design and production process that contribute to the total CO<sub>2</sub> footprint. This enables companies to:

- Make targeted choices for less CO<sub>2</sub>-intensive energy sources and materials.
- Develop sustainability strategies based on reliable data.
- Set priorities for CO<sub>2</sub> reduction together with customers.

### Offsetting the carbon footprint

Based on the detailed calculations, ClimateCalc can provide a documented and accurate basis for offsetting the remaining CO<sub>2</sub> emissions. This contributes to transparency and credibility in sustainability reporting.

## Energy consumption

Lijnco consumes approximately 2.3 million kWh of electricity annually, of which 80% is generated by our own solar panels and 20% comes from wind energy. Although we at Lijnco use green energy entirely, we find it important to keep our energy consumption as low as possible. In this way, we ensure that no energy is wasted that could be better used elsewhere.

### That is why we have taken several measures to minimize our energy consumption:

- All lighting in our company building has been replaced by energy-efficient LED lighting.
- We have invested in adiabatic cooling as a replacement for traditional air conditioning.
- Our compressors are set to be energy-efficient and the compressed air systems are regularly checked.
- The entire ridge extraction system has been replaced by energy-efficient systems.
- When purchasing new machines, we always pay attention to their energy consumption.

Lijnco relies on natural gas to heat its offices, production areas and warehouses. Lijnco's building is over 50 years old and is not easy to make suitable for alternative heating. By investing in insulation, new central heating boilers and continuously monitoring and optimising the heating line, it was possible to reduce gas consumption by over 35% in 2024 compared to the reference year 2021. This saving results in a reduction of 60t CO<sub>2</sub> eq, which is equal to the amount of CO<sub>2</sub> that 6 hectares of forest can absorb in a year.

In addition to the CO<sub>2</sub> emissions from burning natural gas for heating, a small part can also be attributed to the use of fuels for company cars. Measures have also been taken here, for example, the cars are replaced by electric cars at the end of the lease term, internal transport is fully electric and there is an active policy to reduce emissions caused by commuting. Additional charging stations have been installed for employees who switch to electric driving and the use of bicycles instead of driving is encouraged by reimbursements in the bicycle plan.

### CO<sub>2</sub> compensation.

Despite the above measures, a small portion of emissions remains that cannot be further reduced or avoided. These unavoidable emissions are annually compensated by Lijnco through the Gula Gula project of CO<sub>2</sub> Operate. The Gula Gula

project, monitored by the independent Plan Vivo system, guarantees real and fair CO<sub>2</sub> compensation by planting food forests in Indonesia. These food forests play a crucial role in restoring degraded ecosystems, storing CO<sub>2</sub>, and providing sustainable sources of income for local communities.

### What makes the Gula Gula project special?

- Biodiversity restoration: By planting native tree species and crops, the project contributes to the restoration of biodiversity in areas affected by deforestation.
- Food security: The food forests produce crops such as fruits, nuts and herbs, which provide the local population with food and a source of income.
- Economic empowerment: The project provides employment opportunities and encourages sustainable land use, which improves the quality of life of local communities.
- Sustainable CO<sub>2</sub> storage: The planted trees and plants store CO<sub>2</sub>, which contributes to the global fight against climate change.

We are proud to be part of this initiative, contributing to a greener and fairer world.



The Gula Gula project is located in West Sumatra.



## Objectives

### Scope 1

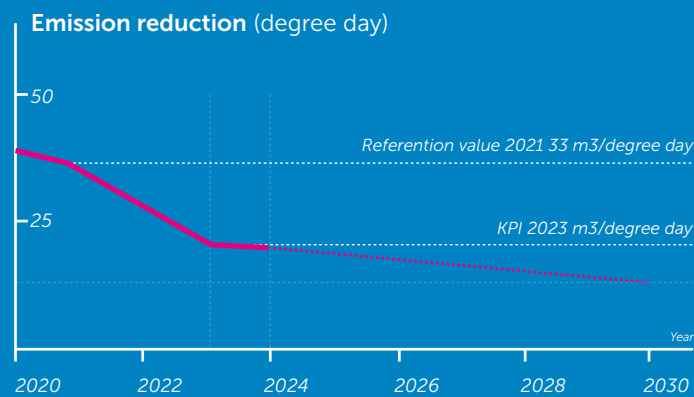
We aim to reduce scope 1 emissions by 50% by 2030 compared to 2021 levels. We will achieve this by replacing all cars with electric vehicles by 2028, making even greater use of residual heat recovery, implementing additional insulation measures, and investing in partial electric heating of production halls.

Reference value 2021	33 M3/degree day
KPI 2023	20 M3/degree day
KPI 2024	19 M3/degree day (insight after first 10 months)

### Scope 2

From 2023 onwards, Lijnco will only use green energy, which means that CO<sub>2</sub> emissions within scope 2 will be 0. This level will be checked and maintained annually by drawing up an emission inventory and periodic audits, with the aim of maintaining this status in the future.

KPI = 0 emission



Below: sustainable CO<sub>2</sub> storage: The planted trees store CO<sub>2</sub>, which contributes to the global fight against climate change.











### The Gula Gula Project by CO2 Operate

The Gula Gula Project by CO2 Operate is an initiative that aims to provide real and fair carbon offsets. This project is designed to not only reduce greenhouse gas emissions, but also contribute to sustainable development and nature conservation.

The Gula Gula project is strictly monitored by Plan VIVO, an internationally recognized certification system that guarantees transparency, reliability and effectiveness in carbon offset projects. Thanks to these strict guidelines, companies and individuals can be sure that their contribution will actually lead

to measurable climate benefits and positive impacts on local communities.

The Gula Gula Project combines climate protection with ecological restoration, actively involving local communities. As a result, the project not only contributes to the reduction of carbon emissions, but also supports social and economic development in the regions where it operates.



## Waste management

We are also working hard to improve sustainability in the area of waste management. We do not see waste as waste, but as an opportunity to reuse materials.

Almost all products we make are made of paper. Paper is a material that is relatively easy to recycle. We send the waste that is released during our production to paper factories to make new paper from it.

We carefully separate the paper waste in our process based on quality. This is called source separation. Because the paper is delivered per type (unprinted white, printed paper, cardboard) and clean, it takes less energy to make new paper from it.

### Improving recyclability

The recyclability of our products is very important. We help customers to design their products in such a way that they are more recyclable. We also work with our suppliers to choose raw materials that make recycling easier.

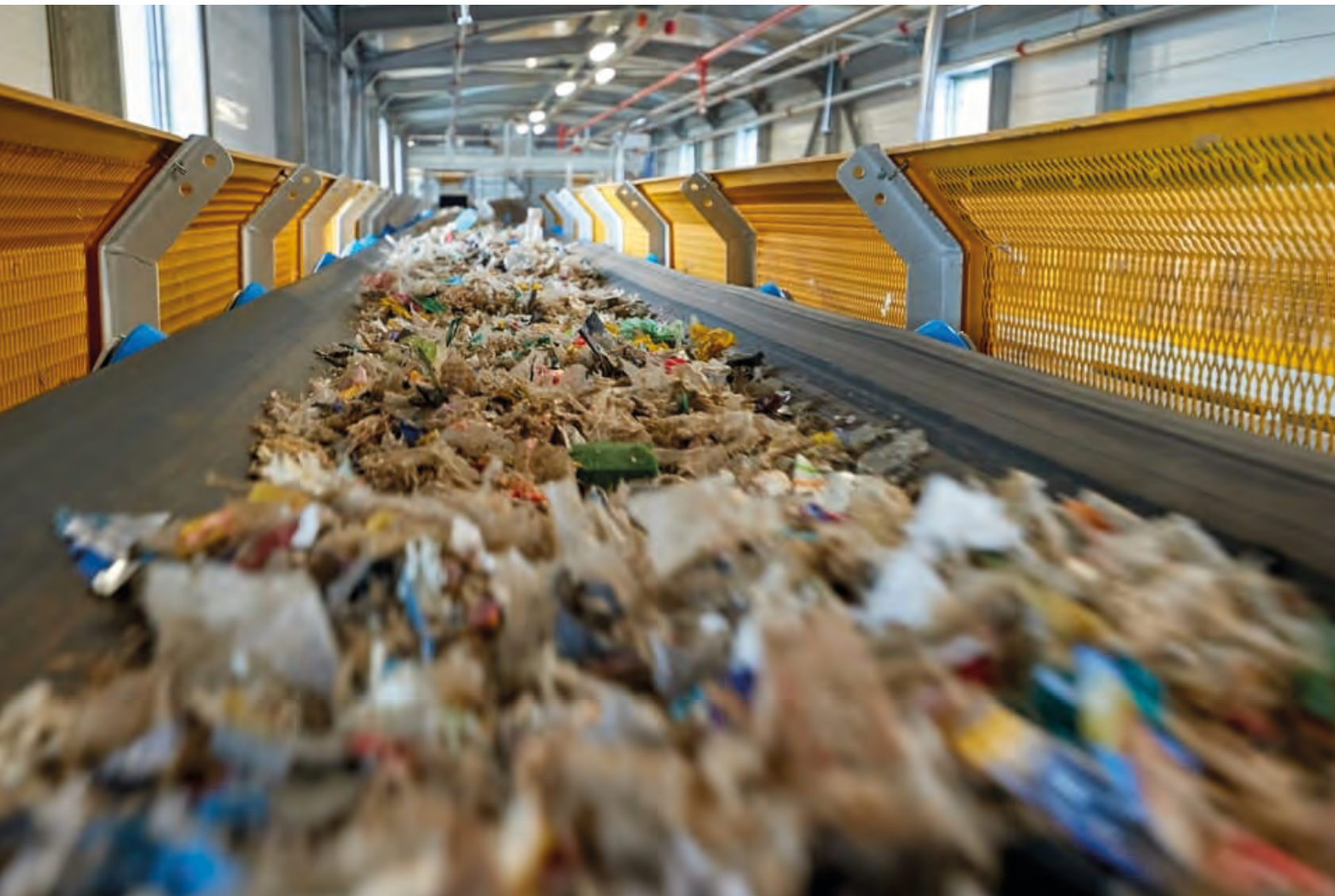
An example of this is that we prefer to use self-adhesive materials with a kraft backing instead of a glassine backing. This

adjustment ensures that products can be recycled better.

All waste streams in our company are separated based on recyclability and type of material. Plastic and metal are collected separately, printing plates are disposed of separately, and clean foil is also collected separately. By separating waste streams in advance, recycling becomes more efficient and costs less energy. After this separation, only a small amount of residual waste remains.

### Less hazardous waste

Chemical waste streams are carefully separated based on waste stream numbers and transported to specialist processors. By improving our processes, using environmentally friendly alternatives and increasingly switching to digital printing, Lijnco has significantly reduced the amount of chemicals used in recent years.



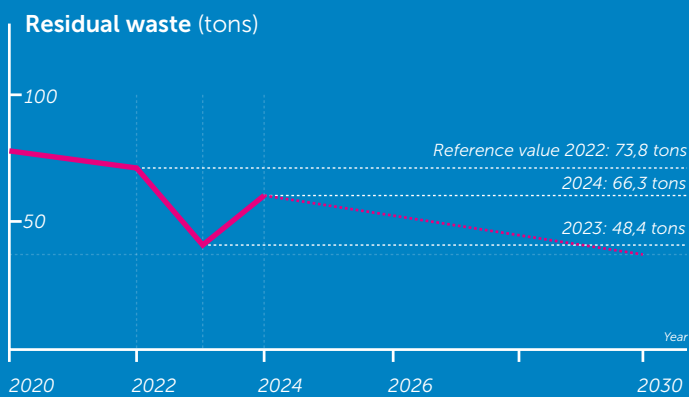


## Objectives

### Less residual waste.

We want to reduce the residual waste that can no longer be reused. Our goal is to have 40% less residual waste in 2030 than in 2022, a decrease of at least 3.75 t per year.

Reference year 2022:	73,8 tons of residual waste
2023:	48,4 tons of residual waste
KPI 2024	66,3 tons of residual waste

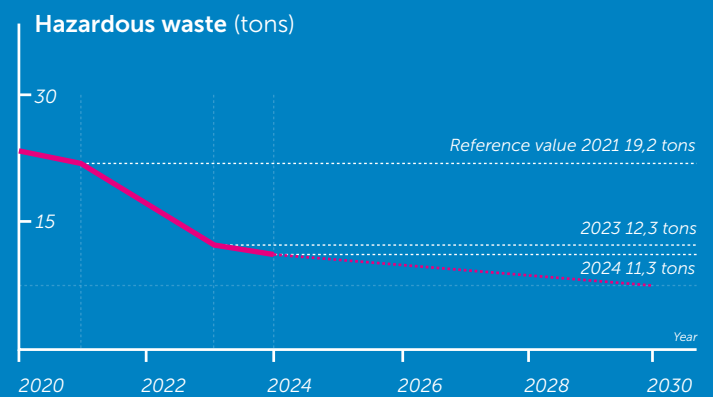


### Less hazardous waste.

Lijnco aims to dispose of 50% less hazardous waste by 2030. This reduction will be achieved partly organically, through the transition to digital techniques, and partly through process optimization and the use of alternative resources.

Reference year 2021	19,2 tons of residual waste
2023	12,3 tons of residual waste
KPI 2024	11,3 tons of residual waste

We will continue to make conscious choices to reduce waste and improve recycling by 2025.



## Water consumption

Although our production process as a printing company uses relatively little water ( $\pm 20$  M3 per year) and water use is not a significant environmental aspect within our activities, we recognize the importance of sustainable water management.

### Our policy includes the following points:

#### Efficient water use

We strive to keep our water consumption as low as possible by using more efficient techniques and processes where possible.

Pollution Prevention: we ensure that our process does not contaminate water sources by safely handling inks, solvents and other materials used in our production process.

#### Conscience

Although our own water consumption is minimal, both the production and recycling of paper use a significant amount of water. Therefore, we see it as our responsibility to actively consider water use, as well as CO<sub>2</sub> emissions, in our purchasing decisions when selecting paper types and suppliers. We support the broader principles of sustainable water use and endorse SDG goal 6. This by working with suppliers who also adhere to sustainable practices.

Our approach ensures that our use of water remains responsible and in line with environmental protection and sustainability standards.





## Objectives

### Waterquality

By 2025, we aim to have zero incidents that could cause water pollution, by ensuring 100% compliance with our internal guidelines and environmental legislation.

#### We achieve this by:

- To perform at least 2 internal audits annually on compliance with work instructions
- In the toolbox meetings, work instructions and measures are discussed for processes with a potential risk of water contamination.

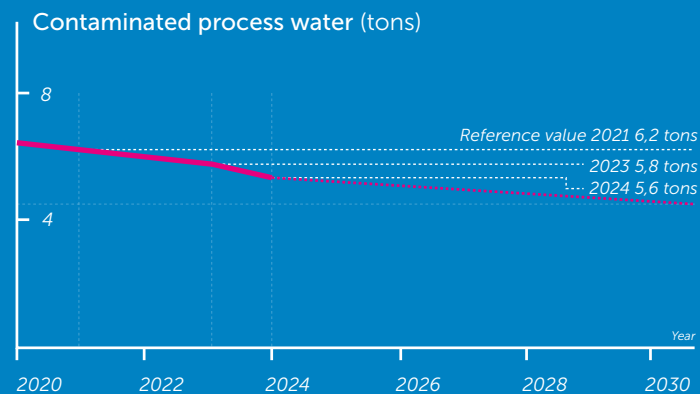
Reference Value 2021	0 incidents
KPI 2024	0 incidents

### Disposal of contaminated process water

Lijnco aims to reduce the amount of contaminated process water by 25% by 2030.

Reference value 2021 6,2 t contaminated process water

2023	5,8 t contaminated process water
KPI 2024	5,6 t contaminated process water



Sustainable purchasing

Sustainable purchasing plays an important role in Lijnco's sustainability strategy. By making conscious choices in the supply chain, we ensure that our raw materials and packaging contribute to a circular economy and minimal environmental impact. Our purchasing policy focuses on selecting suppliers with the same standards and ambitions.



Objectives

Sustainable and socially responsible paper: Lijnco strives to purchase only paper that comes from sustainably managed forests and is guaranteed not to have a negative social impact. This means that Lijnco only purchases paper that is certified according to the FSC or PEFC standards.

Target value:	100%
Value 2023:	100%

Both internal and external audits have not revealed any issues or shortcomings. Lijnco is 100% compliant with FSC and PEFC certifications.

100% Sustainable and Renewable Packaging in 2030: Lijnco aims to use only sustainable, renewable packaging in 2030. This means that we use recycled material for boxes, use reusable pallets and apply bioplastics. The policy focuses on reuse and avoiding single-use packaging materials as much as possible. The share of sustainable packaging is currently 88%.

Target value 2030:	100% sustainable packaging
Value 2023:	88% sustainable packaging

Chain responsibility:

Lijnco only works with suppliers who take sustainability and social responsibility seriously. We ask for certificates and supplier declarations and do our own research to check this.

Target value:	2027 100% suppliers assessed
Value 2023:	30% suppliers assessed

Risk analyses and due diligence investigations have not revealed any signals or risks regarding negative environmental and social practices at suppliers.







## Social responsibility and working conditions

At Lijnco, we attach great importance to social responsibility and the well-being of our employees.

Working conditions: We ensure a safe and healthy working environment that forms the basis for satisfied employees.

### To ensure this, we have taken various measures:

- **Periodic Safety Checks:** Our work areas are regularly inspected by the prevention officer to ensure that they meet the highest safety standards.
- **Workstations:** Workstations are equipped with ergonomic furniture and tools to minimize physical strain. Employees receive work clothing and personal protective equipment.
- **Training and accident prevention:** Through toolbox meetings and training, employees are trained in awareness of working with machines and hazardous substances.
- **RI&E:** We have set up the Grafimedia RI&E, drawn up by the trade association, as a practical tool to systematically inventory all occupational risks within the company. In this way, we not only comply with the legal obligation, but we also work specifically on better working conditions, a more pleasant working atmosphere and higher productivity.

### Fair Labor Practices

We arrange remuneration and employment conditions according to the Collective Labour Agreement (CAO) of the Graphic Media sector. In this way, we ensure fair and inclusive employment practices, in which everyone is given equal opportunities, regardless of background, gender or age. Employees are also automatically affiliated with the General Social Fund (ASF), which represents the social interests of employees and their families. The ASF offers schemes for healthcare, training, compensation for activities related to the inflow, throughput and outflow and sustainable employability of employees.

- **Equal Pay:** Lijnco follows a strict policy to guarantee equal pay for equal work.
- **Sustainable Employability and Development:** Training and development programs are offered to help employees grow in their careers.
- **Diversity and Inclusion:** We promote diversity within our workforce and have a zero tolerance policy against bullying and discrimination in the workplace.

### Cooperation with Suppliers

Our social responsibility extends beyond our own organization.

We work exclusively with suppliers who share the same values in the area of working conditions. We check this by:

- **Audits and Supplier Assessments:** Regular audits to ensure compliance with ethical labor standards.
- **Certifications:** Give preference to suppliers with recognized certificates for labor standards and sustainability.
- **Transparency:** Collaborate with parties that are open about their working conditions and policies.

### Social Impact

In addition to internal measures, we actively contribute to social projects aimed at community development and employment:

- **Training programs:** We offer people who are at a distance from the labor market or who do not yet have the right competencies for the graphic profession a job and training through a BBL.
- **Social employment:** We work with social work projects where people can work on our clients' projects in a protected and safe environment.

Investing in social responsibility and working conditions is not only ethically correct but also makes an important contribution to the sustainability of our company.







## SDG goals

The Sustainable Development Goals (SDG's) of the United Nations form a global agenda for sustainable development, focusing on themes such as poverty reduction, climate protection and responsible use of resources. With our efforts we actively contribute to several SDGs.

In this sustainability report of Lijnco BV, various Sustainable Development Goals (SDGs) are supported by the described measures and initiatives. Here are the most important SDGs that are strengthened by Lijnco's efforts:

6



### SDG 6: Clean water and sanitation

- Efficient water use: Minimizing water consumption in production processes and collaborating with paper suppliers who apply sustainable water management.
- Pollution Prevention: Careful handling of materials so as not to contaminate water sources.
- Water quality objective: Aim for 0 incidents of water pollution.

7



### SDG 7: Affordable and sustainable energy

- Use of green energy: 80% of the energy requirement is covered by our own solar panels and 20% by wind energy.
- Energy savings: Investments in LED lighting, energy-efficient compressors, and replacement of traditional air conditioning with evaporative cooling.

8



### SDG 8: Decent work and economic growth

- Sustainable business operations: Promoting fair and safe working conditions within your own organization and collaborating with suppliers who meet ethical and sustainable standards.
- Economic Empowerment: Contribute to projects like Gula Gula, which support local communities by creating employment.

9



### SDG 9: Industry, innovation and infrastructure

- Efficient production processes: Optimization of production with a focus on waste reduction and material reuse.
- Innovation in printing techniques: Use of digital printing methods and sustainable techniques to reduce harmful emissions and waste streams.



12



#### SDG 12: Responsible consumption and production

- Waste management and recycling: Separate collection of waste streams, use of recycled paper and minimization of residual waste.
- Conscious use of materials: Advice to customers on designs that are more recyclable and choices for sustainable raw materials.
- Reduction of hazardous waste: Transition to environmentally friendly alternatives and process optimizations.

13



#### SDG 13: Climate action

- CO<sub>2</sub> reduction: Targets for reducing CO<sub>2</sub> emissions per kilogram of product produced by 45% by 2030.
- CO<sub>2</sub> compensation: Participation in the Gula Gula project for planting food forests.
- Monitoring and reporting: Using ClimateCalc to calculate footprint and track progress.

15



#### SDG 15: Life on the land

- Forest protection: Use of FSC and PEFC certified paper, which supports responsible forest management.
- Gula Gula Project: Planting food forests in Indonesia, restoring biodiversity, and conserving ecosystems.

17



#### SDG 17: Partnerschap om doelstellingen te bereiken

- Stakeholder Collaboration: Partnership with suppliers, customers and projects like Gula Gula to further promote sustainability.
- Sharing knowledge: Advising customers on sustainable production and footprint reduction.

Certifications

In order to achieve its objectives and independently demonstrate its performance, Lijnco BV has the following certifications:



ISO 9001  
Quality management system



ISO 14001  
Environmental management system



ISO 27001  
Information security system




FSC  
Paper from sustainable forestry



PEFC  
Paper from sustainable forestry



CO<sub>2</sub> Prestatieladder niveau 5  
System for demonstrable CO<sub>2</sub> reduction

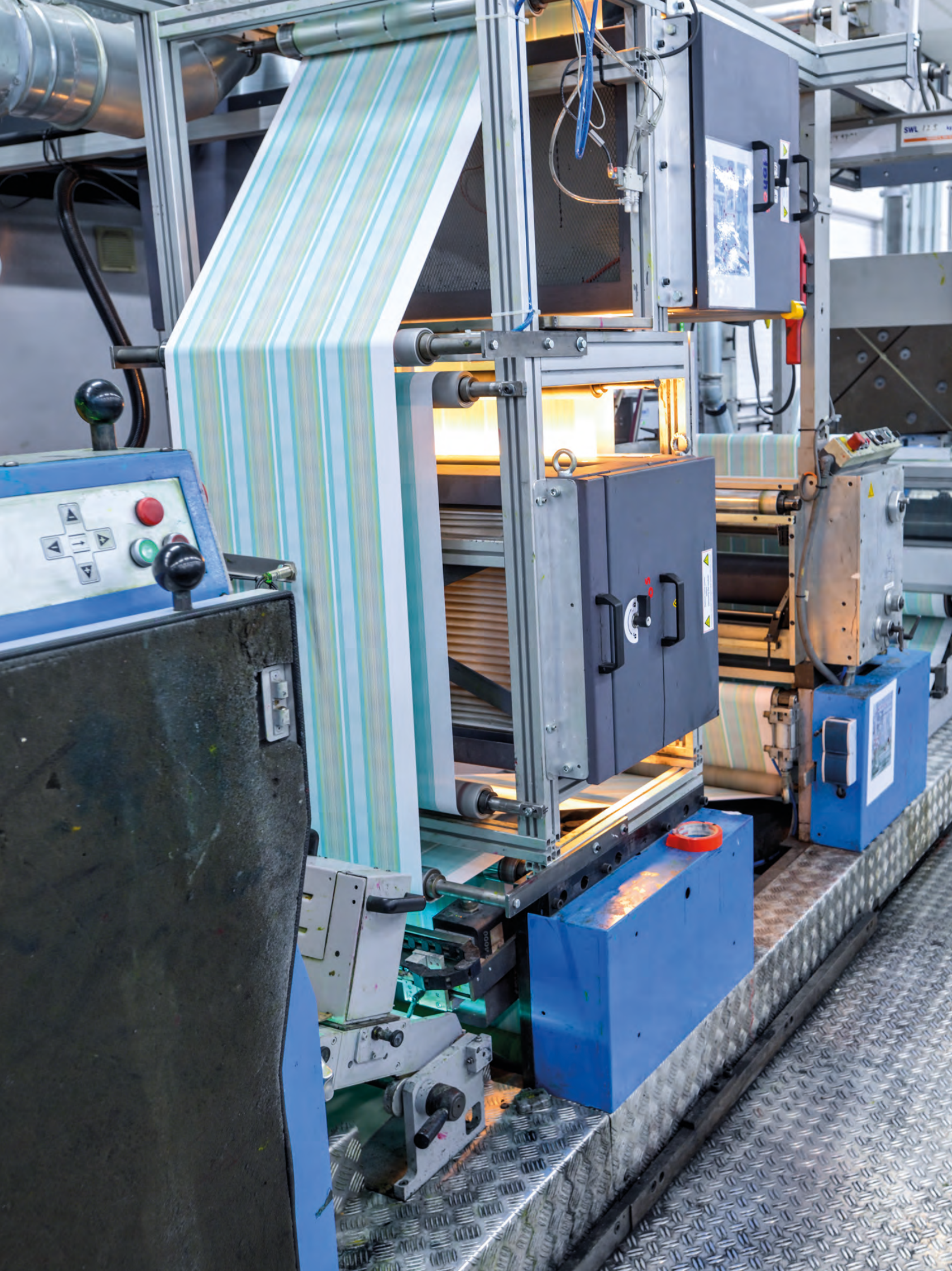


ClimateCalc  
Certified footprint calculation



EcoVadis  
EcoVadis sustainability assessment







## Conclusion

Lijnco is committed to sustainable production and demonstrates that quality and sustainability can go hand in hand. By consciously choosing sustainable materials, efficient processes and collaborating with partners, we have already significantly reduced our CO<sub>2</sub> emissions and waste flows. Our specific objectives, such as a 45% CO<sub>2</sub> reduction by 2030 and a further reduction in residual waste and energy consumption, demonstrate how important we consider sustainable business operations. Innovation, responsibility and transparency remain at the core of our policy, so that we not only contribute to a more sustainable future, but also demonstrate that we want to continue working together to achieve shared sustainability goals. With this approach, we want to maintain and strengthen our position as a leader in sustainable graphic production.

Jan de Klein, CEO Lijnco BV

## Acknowledgements

This report was composed by Peter de Vries, Manager KAM & Security of Lijnco BV. The creation of this first sustainability report is the result of the enthusiastic collaboration between the management and executives of all departments of Lijnco. Employees of HR, Finance, Sales, the project office and the production department have provided valuable input and actively participated. We would like to thank everyone who contributed to this report for their dedication and involvement.









